



Gauteng Province

BUDGET BOOKLET 2021



GAUTENG
PROVINCIAL GOVERNMENT
REPUBLIC OF SOUTH AFRICA



GGT2030
GROWING GAITENG TOGETHER

Table of Contents

English

Pg. 2

Afrikaans

Pg. 15

isiZulu

Pg. 26

Sepedi

Pg. 37

Gauteng Budget 2021/22 – Foreword	2	15	26	37
The Priorities of the Growing Gauteng Together 2030 Plan	4	17	28	39
Sources of our Budget	5	18	29	40
Own Revenue	6	19	30	41
Conditional Grants	7	20	31	42
Provincial Spending	8	21	32	43
• Function				
• Economic Classification				
• Spending on Personnel	9	22	33	44
Spending on Social Services	10	23	34	45
Spending on Infrastructure	11			
Spending on Provincial Specific Priorities	13	24	35	46
Where have we increased our spending?	14	25	36	47
Spatial Referencing of the Infrastructure Budget	48	48	48	48
General Information	52	52	52	52
• Access to Information				

Foreword: Gauteng Budget 2021/22



Ms. Nomantu Nkomo-Ralehoko

Gauteng MEC for Finance

The 2021 Medium-Term Expenditure Framework (MTEF) planning and budgeting period will be leading up to the end of the Sixth Administration. This budget is being tabled against the backdrop of the devastation brought about by the COVID-19 pandemic, which aggravated further the adverse economic situation that South Africa, and Gauteng was facing a year ago. The COVID-19 pandemic is a once-in-a-lifetime global event not experienced since the previous century, and acutely brings to the fore the need to adapt to the new normal.

The compilation of this budget has been anchored in the principles of economic reconstruction and recovery, as well as the continued implementation of the national fiscal consolidation programme to stabilise public debt and ensure fiscal sustainability in the medium-term.

The 2021 MTEF budget has allocated resources to advance our fight against the effects of the COVID-19 pandemic on the socio-economic situation of the province, the shifting of funding from consumption to investment to stimulate economic growth, as well as the protection of resources already allocated to fund the continued implementation of the “Growing Gauteng Together 2030” (GGT2030) Plan, which has been adjusted to take into account the changed environment.

The 2021 MTEF Budget gives effect to the key areas that the Premier outlined and emphasised in the State of the Province Address on 23rd February 2021. These are winning the battle against the COVID-19 pandemic and increasing our preparedness for any future disaster, reigniting the powerhouse of South Africa in economic recovery with an emphasis on job creation through reindustrialisation, refocussing the social policy to address crime while confronting poverty and inequality, as well as improving and expanding service delivery while improving governance and oversight.

The 2021/22 budget amounts to R142.6 billion, and cumulatively R435 billion over

the MTEF. We have allocated the largest share of this budget for the social services delivered by Gauteng Department of Health, Gauteng Department of Education and Gauteng Department of Social Development.

The 2021 MTEF budget is one of the means for building social compacts to deliver the “Growing Gauteng Together 2030” Plan. Together, we can build a sustainable future for the people of the province.



Nomantu Nkomo-Ralehoko
MEC: Finance and e-Government

The Priorities of the Growing Gauteng Together 2030 Plan



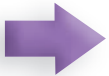
Economy, jobs and infrastructure



Education, skills revolution and health



Integrated human settlements and land release



Safety, social cohesion and food security



A capable, ethical and developmental state

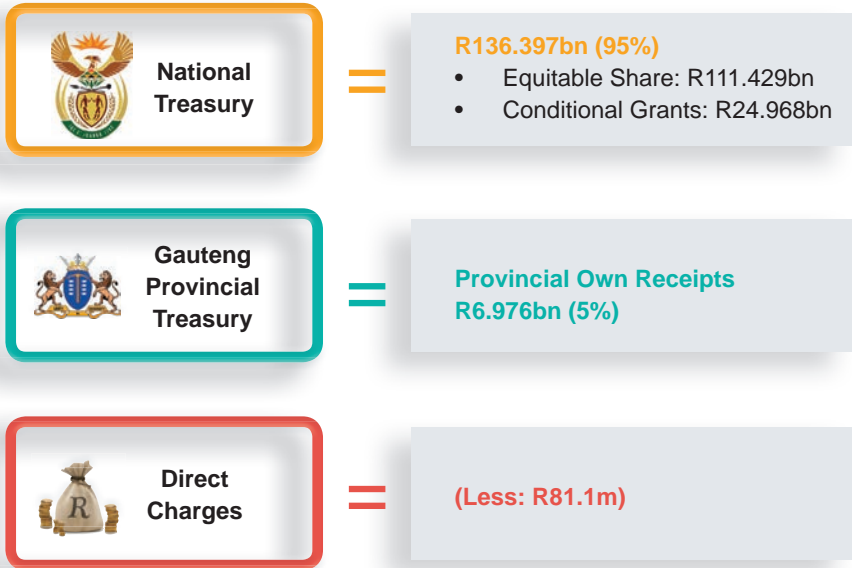


Building a better Africa and the world



Sustainable development for future generations

Sources of Our Budget



Total Budget = R 143.292bn

Own Revenue

Motor Vehicle Licences

R4.480bn
(64%)



Gambling and Betting Taxes

R1.163bn
(17%)



Total Revenue
R 6.976bn

Sales of Goods and Services

R656.9m
(9%)



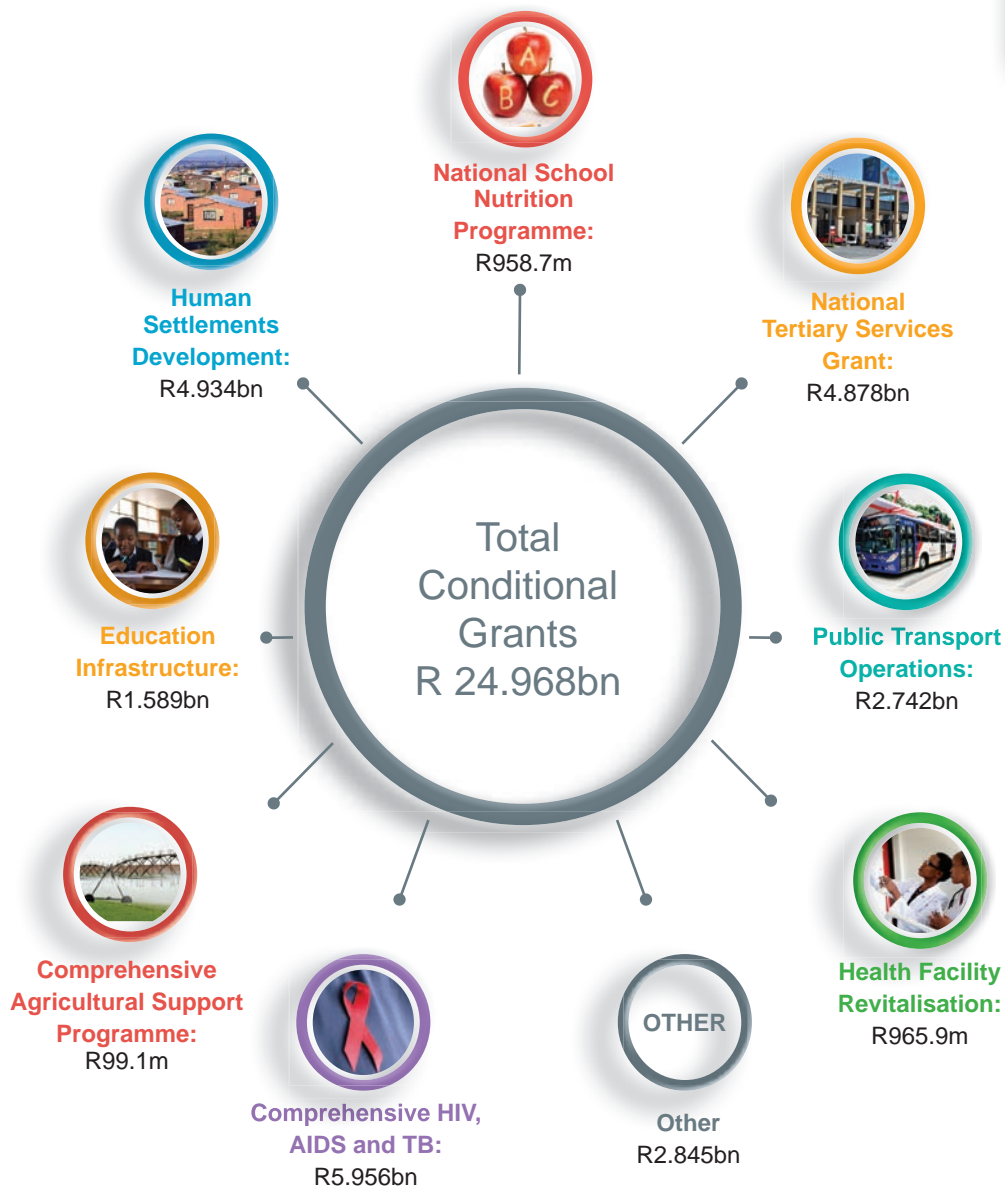
Other Revenue

R675.7m
(10%)

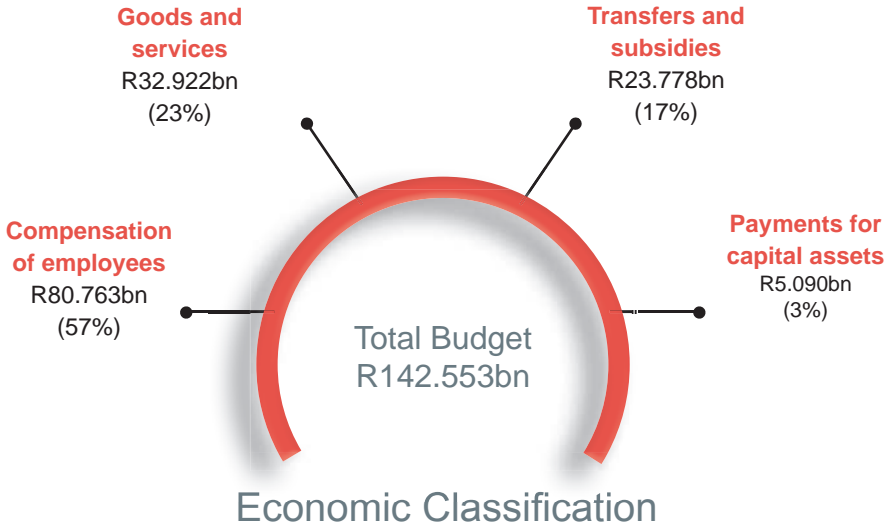
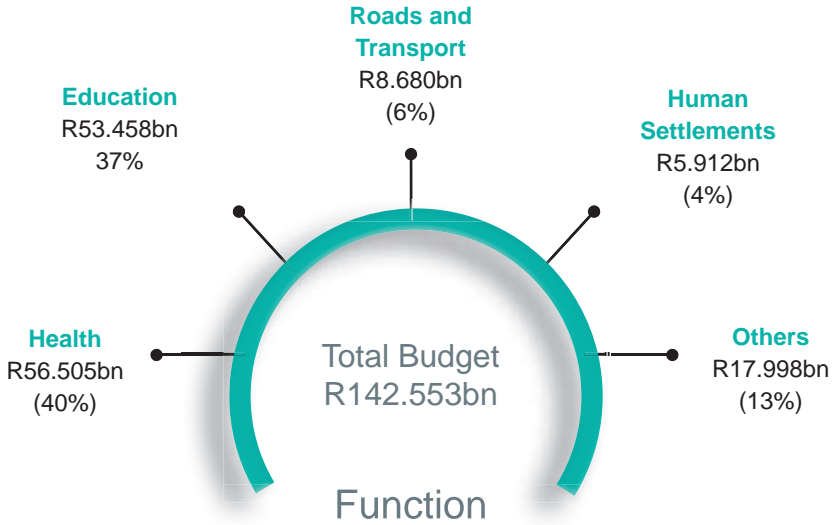


Other revenue consists of fines, penalties and forfeits; interest; and financial transaction in assets and liabilities.

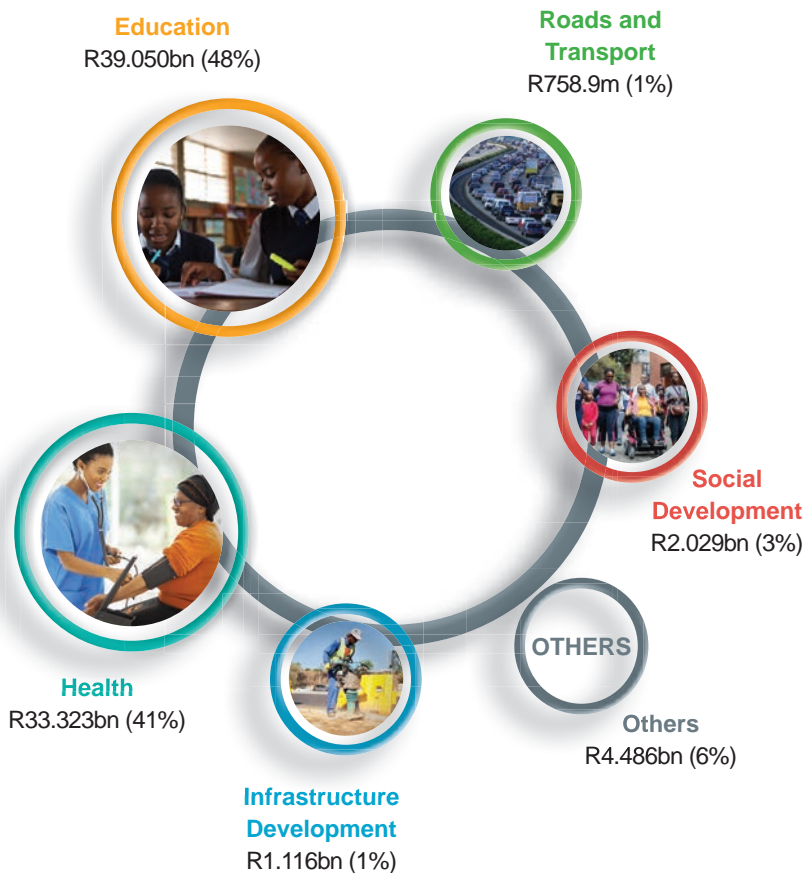
Conditional Grants



Provincial Spending



Spending on Personnel



Others consists of: Economic Development; Cooperative Governance and Traditional Affairs; Human Settlements; Community Safety; Agriculture and Rural Development; Sport, Arts, Culture and Recreation; e-Government; Provincial Treasury and Office of the Premier

Spending on Social Services

EDUCATION



Public Ordinary School Education R38.802bn
Public Special School Education R4.522bn
Examination and education related services R1.721bn
Infrastructure Development R1.619bn
Other R6.794bn

HEALTH



District Health Services R19.597bn
Central Hospital Services R19.603bn
Provincial Hospital Services R10.623bn
Health Facilities Management R2.276bn
Other R4.406bn

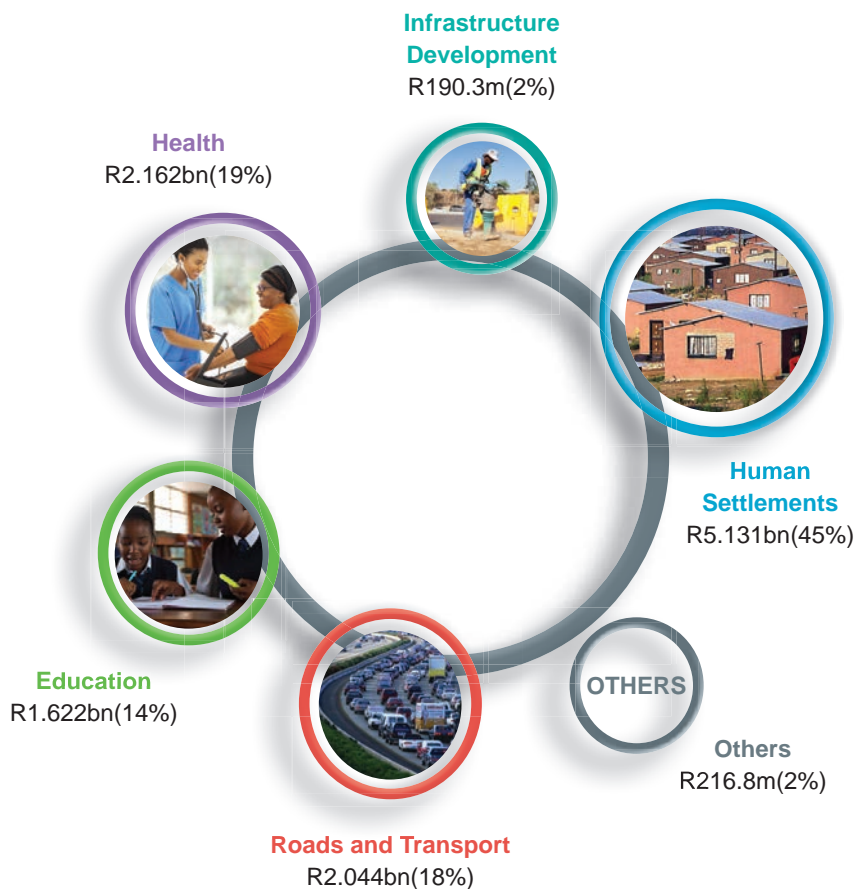
SOCIAL DEVELOPMENT



Children and Families R2.619bn
Social Welfare Services R989.4m
Restorative services R783.8m
Research and Development R749.1m
Other R741.2m

Total Social Services = R 115.846bn

Spending on Infrastructure



Others consist of: Social Development; Sport, Arts, Culture and Recreation; Infrastructure Development and Agriculture and Rural Development.



Health
R2.162bn

Improving quality of health care.

Central Corridor

R866m

Eastern Corridor

R205.2m

Northern Corridor

R540.4m

Southern Corridor

R280.9m

Western Corridor

R261.9m

Across various Corridors

R7.3m



Education
R1.622bn

Improving quality of education.

Central Corridor

R225.4m

Eastern Corridor

R138m

Northern Corridor

R113.8m

Southern Corridor

R83.5m

Western Corridor

R45.8m

Across various Corridors

R1.015bn



Roads and Transport
R2.044bn

Improving roads and linkage in the province.

Central Corridor

R166.5m

Eastern Corridor

R75.8m

Northern Corridor

R337.3m

Southern Corridor

R74m

Western Corridor

R88.5m

Across various Corridors

R1.302bn



Human Settlements
R5.131bn

Improving quality of household life.

Central Corridor

R516.3m

Eastern Corridor

R452m

Northern Corridor

R438.9m

Southern Corridor

R479.9m

Western Corridor

R866.2m

Across various Corridors

R2.378bn

Spending on Provincial Specific Priorities



Where have we increased our Spending?

DEPARTMENT	ADJUSTMENT APPROPRIATION 2020/21	MAIN APPROPRIATION 2021/22	% CHANGE 2020/21-2021/22
Health	58 835 503	56 505 266	-4%
Education	52 876 598	53 458 053	1%
Social Development	5 887 349	5 882 786	0%
Human Settlements	5 377 907	5 912 132	9%
Roads and Transport	8 377 996	8 680 417	3%
Infrastructure Development	3 197 771	3 260 931	2%
Other	8 479 267	8 853 221	4%
Total provincial payments and estimates	143 649 058	142 552 806	-1%
Social	117 599 450	115 846 105	-2%
Non Social	26 049 608	26 706 701	2%
Total Appropriation	143 649 058	142 552 806	-1%

Other consists of: Economic Development; Cooperative Governance and Traditional Affairs; Community Safety; Agriculture and Rural Development; Sport, Arts, Culture and Recreation; e-Government; Provincial Treasury and Office of the Premier

Voorwoord: Gauteng Begroting 2021/22



Me. Nomantu Nkomo-Ralehoko

Gauteng LUR vir Financies

Die 2021-Mediumtermynbegrotingsraamwerk (MTBR) se beplanning- en begrotingstydperk lei tot die einde van die Sesde Administrasie. Hierdie begroting word ter tafel gelê teen die agtergrond van die verwoesting wat deur die COVID-19-pandemie teweeggebring is en wat die nadelige ekonomiese situasie waarvoor Suid-Afrika en Gauteng verlede jaar te staan gekom het, vererger het. Die COVID-19-pandemie is 'n eenmalige wêreldwye gebeurtenis wat nog nie sedert die vorige eeu ervaar is nie en bring die behoefte om by die nuwe normaal aan te pas, sterk na vore.

Die samestelling van hierdie begroting is in die beginsels van ekonomiese heropbou en herstel geanker, asook die voortgesette implementering van die nasionale fiskale konsolidasieprogram om openbare skuld te stabiliseer en fiskale volhoubaarheid op medium termyn te verseker.

Die 2021-MTBR-begroting het hulpbronne toegewys om ons stryd teen die uitwerking van die COVID-19-pandemie op die sosio-ekonomiese situasie van die provinsie te bevorder, die verskuiwing van fondse van verbruik na belegging om ekonomiese groei te stimuleer en ook die beskerming van hulpbronne wat reeds toegewys is om die voortgesette implementering van die "Om Gauteng saam te laat groei 2030" (GGT2030) plan te befonds, wat aangepas is om die veranderde omgewing in aanmerking te neem.

Die 2021-MTBR-begroting gee uitvoering aan die sleutelgebiede wat die Premier op 23 Februarie 2021 in die Provinsiale Rede uitgestippel het. Hulle wen die stryd teen die COVID-19-pandemie en verhoog ons gereedheid vir enige toekomstige rampe, wat die stukrag van Suid-Afrika in ekonomiese herstel weer laat opvlam met die klem op werkskepping deur herindustrialisasie, wat die maatskaplike beleid herfokus ten einde aandag aan misdaad te gee, terwyl armoede en ongelukheid die hoof gebied word asook die verbetering en uitbreiding van dienslewering terwyl beheer en toesig verbeter word.

Die 2021/22-begroting beloop R142,6 miljard en kumulatief R435 miljard oor die MTBR. Ons het die grootste deel van hierdie begroting aan maatskaplike dienste toegewys wat

deur die Gauteng Departement van Gesondheid, Gauteng Onderwysdepartement en Gauteng Departement van Maatskaplike Ontwikkeling gelewer word.

Die 2021-MTBR-begroting is een van die maniere om maatskaplike ooreenkomste aan te gaan ten einde die “Om Gauteng saam te laat groei 2030” plan te lewer. Saam kan ons 'n volhoubare toekoms vir die mense van die provinsie bou.



Nomantu Nkomo-Ralehoko
LUR: Finansies

Die prioriteite van die groeiende: 2030 plan van Gauteng



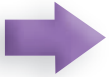
Ekonomie, werk en infrastruktuur



Onderwys, vaardigheidsrevolusie en gesondheid



Geïntegreerde menslike nedersettings en grondvrystelling



Veiligheid, maatskaplike samehorigheid en voedselsekerheid



'n Bevoegde, etiese en ontwikkelingstaat

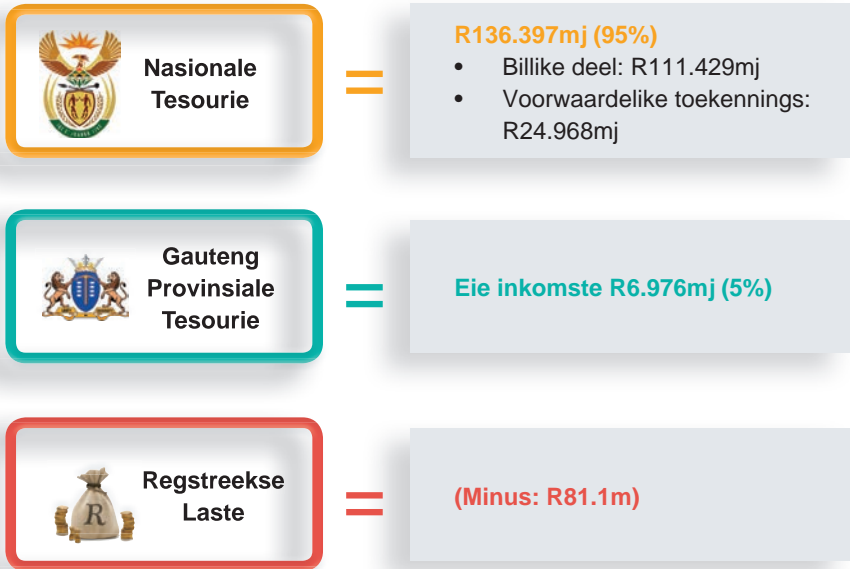


Om 'n beter Afrika en wêreld te bou



Volhoubare ontwikkeling vir toekomstige generasies

Bronne van ons Begroting



Totale Begroting = R 143.292mj

Eie Inkomste

Motorvoertuiglisensies

R4.480mj
(64%)



Belasting op dobbelary en weddenskappe

R1.163mj
(17%)



Totale Inkomste
R 6.976mj

Verkope van goedere en dienste

R656.9m
(9%)



Ander inkomste

R675.7m
(10%)

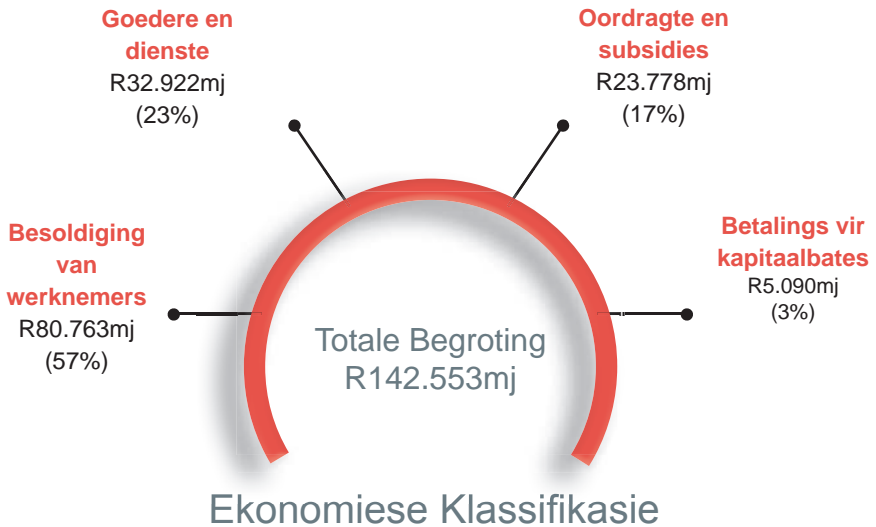
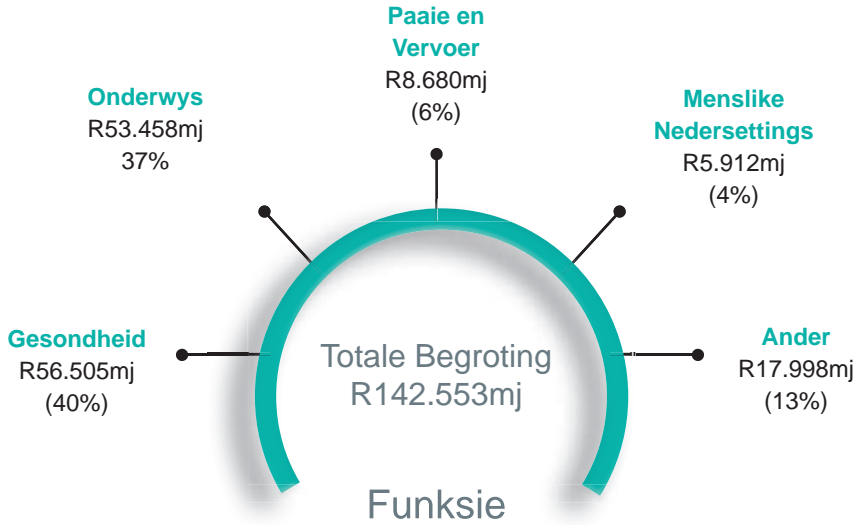


Ander inkomste bestaan uit boetes, strawwe en verbeurings; rente; en finansiële transaksies in bates en laste.

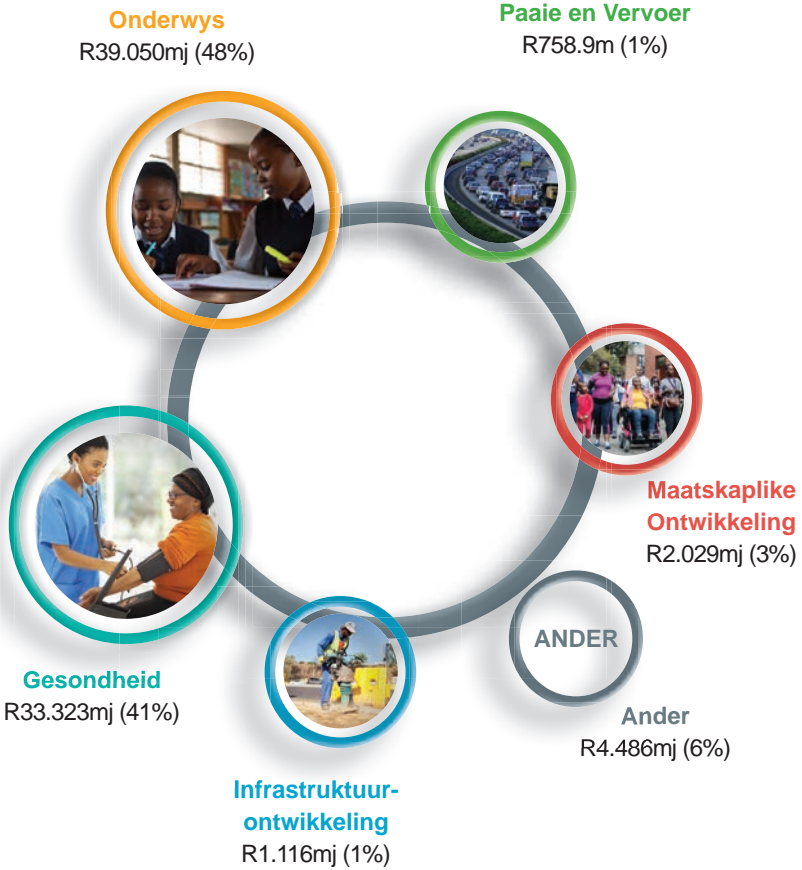
Voorwaardelike Toekennings



Provinsiale Besteding



Besteding aan Personeel



Ander bestaan uit: Ekonomiese Ontwikkeling; Samewerkende Regering en Tradisionele Sake; Menslike Nedersettings; Gemeenskapsveiligheid; Landbou en Landelike Ontwikkeling; Sport, Kuns, Kultuur en Rekreasie; e-Regering; Provinsiale Tesourie en Kantoor van die Premier

Besteding aan Maatskaplike Dienste

ONDERWYS



Openbare Gewone Skoolonderwys R38.802mj
Openbare Spesiale Skoolonderwys R4.522mj
Eksamen- en onderwysverwante dienste R1.721mj
Infrastruktuur-ontwikkeling R1.619mj
Ander R6.794mj

GESONDHEID



Distriktgesondheids-dienste R19.597mj
Sentrale Hospitaaldienste R19.603mj
Provinsiale Hospitaaldienste R10.623mj
Hervitalisering vir Gesondheidsfasiliteit R2.276mj
Ander R4.406mj

MAATSKAPLIKE ONTWIKKELING



Kinders en Gesinne R2.619mj
Maatskaplike Welsynsdienste R989.4m
Restoratiewe Dienste R783.8m
Ontwikkeling en Navorsing R749.1m
Ander R741.2m

Totale Maatskaplike Dienste = R 115.846mj

Besteding aan Provinsiale Spesifieke Program



Waar het ons ons besteding verhoog?

DEPARTEMENT	AANSUIWERINGS- BEGROTING 2020/21	HOOFBEGROTING 2021/22	% VERANDERING 2020/21-2021/22
Gesondheid	58 835 503	56 505 266	-4%
Onderwys	52 876 598	53 458 053	1%
Maatskaplike Ontwikkeling	5 887 349	5 882 786	0%
Menslike Nedersettings	5 377 907	5 912 132	9%
Paaie en Vervoer	8 377 996	8 680 417	3%
Infrastruktuur- ontwikkeling	3 197 771	3 260 931	2%
Ander	8 479 267	8 853 221	4%
Totale Provinsiale Betalings en Ramings	143 649 058	142 552 806	-1%
Maatskaplik	117 599 450	115 846 105	-2%
Niemaatskaplik	26 049 608	26 706 701	2%
Totale Begroting	143 649 058	142 552 806	-1%

Ander bestaan uit: Ekonomiese Ontwikkeling; Samewerkende Regering en Tradisionele Sake; Gemeenskapsveiligheid; Landbou en Landelike Ontwikkeling; Sport, Kuns, Kultuur en Rekreasie; e-Regering; Provinsiale Tesourie en Kantoor van die Premier.

Isandulela: Isabelomali SaseGauteng 2021/22



Nomantu Nkomo-Ralehoko

U-MEC: Ezezimali

Isikhathi sokuhlela kanye nesesabelomali sezi-2021 Sezindleko Zaphakathi Nesikhathi (MTEF) sizoqhubeka kuze kube sekupheleni koLawulo lweSithupha. Lesi sabelomali sihlalwe ngemuva komonakalo owaletwa wubhubhane lwe-COVID-19, okwandisa isimo esibi somnotho iNingizimu Afrika, neGauteng eyayibhekene naso onyakeni owedlule. Ubhubhane lwe-Covid 19 isimo esiqala ngqa ukuba khona emhlabeni jikelele esingakaze sibe khona kusukela kukhulunyaka olwedlule, okuveza ngokusobala isidingo sokuphendukisela enjwayeleni entsha.

Ukuhlanganiswa kwalesi sabelomali kugxile ezimisweni zokwakhiwa kabusha nokuvuselelwa kwezomnotho, kanye nokuqhubeka nokusetshenziswa kohlelo lukazwelonke lokuqinisa izimali ukuzinzisa izikweletu zomphakathi kanye nokuqinisekisa ukusimama kwemali esikhathini esimaphakathi.

Isabelomali seMTEF sowezi-2021 sabele izinsizakusebenza zokuqhubekisela phambili ukulwa kwethu nemiphumela yobhubhane lwe-COVID-19 esimweni senhlalomonotho yesifundazwe, ukususwa kwemali esetshenzisiwe ukuya kutshalomali ukuze kukhuthazwe ukukhula komnotho, kanye nokuvelwa kwezinsizakusebenza ezivele sezabelwe ukuxhasa ukusetshenziswa okuqhubekayo koHlelo "Lokukhulisa iGauteng Ndawonye 2030" (GGT2030), olulungisiwe ukuze kubhekelwe isimo esishintshile.

Isabelomali seMTEF sowezi-2021 sisebenza ezindaweni ezibalulekile uNdunankulu azichaze futhi wazigcizelela Enkulumweni Yesimo sesiFundazwe mhla zingama-23 kuNhlolanja 2021. Laba bayayinqoba impi yokulwa nobhubhane lwe-COVID-19 futhi bandisa ukuzilungiselela kwethu kunoma iyiphi inhlekelele yesikhathi esizayo, ukuvuselela amandla eNingizimu Afrika ekubuyisweni komnotho ngokugcizelela ekwakhiweni kwamathuba emisebenzi ngokuvuselelwa kwezimboni, ukubuye kugxilwe kunqubomgomo yezenhlalo ukubhekana nobugebengu ngenkathi kuliwa nobuphofu nokungalingani, kanye nokwenza ngcono nokwandisa ukulethwa kwezinsizakalo

ngenkathi kuthuthukiswa ukuphatha kanye nokwengamela.

Isabelomali sowezi-2021/22 sifinyelela kuzigidigidi eziyi-R142.6, kanti kubalwa kube yizigidigidi ezingama-R435 esikhathini se-MTEF. Sinikele ngesabelo esikhulu kunazo zonke kulesi sabelomali ngemisebenzi yezenhlalakahle ehlinzekwa nguMnyango Wezempilo waseGauteng, uMnyango Wezemfundo waseGauteng kanye noMnyango Wezokuthuthukiswa Komphakathi eGauteng

Isabelomali se-MTEF yezi-2021 enye yezindlela zokwakha izivumelwano zomphakathi ukuletha uhlelo “Lokwakha iGauteng Ndawonye 2030”. Ngokubambisana, singakha ikusasa eliqinisekile kubantu besifundazwe.

Isabelomali se-MTEF sowezi-2021 singenye yezindlela zokwakha izivumelwano zomphakathi ukuletha uHlelo “Lokukhulisa iGauteng Ndawonye 2030”. Ngokubambisana, singakhela abantu besifundazwe ikusasa elizinzile.



Nomantu Nkomo-Ralehoko
U-MEC: Ezezimali

Ukukhulisa iGauteng Ndawonye: Uhlelo lwezi-2030



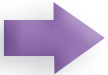
Umnotho, imisebenzi nezingqalasizinda



Imfundo, amakhono aguquguqakayo nezempilo



Izindawo zokuhlala ezihlanganisiwe nokukhululwa komhlaba



Ukuphepha, ukubumbana komphakathi, nokuvikeleka kokudla



Izwe elinamakhono, elinenkambo elungile nelithuthukayo



Ukwakha i-Afrika noMhlaba ongcono



Ukuthuthuka okunozinzo ezizukulwaneni ezizayo

Okuza Kuqala Ohlelweni LokuKhulisa iGauteng Sindawonye Luka 2030



**Umnyango
Womgcinimafa
Kazwelonke**



R136.397bn (95%)

- Isheya Elilinganayo: R111.429bn
- Izimali Zesibonolelo Ezinemibandela: R24.968bn



**Umnyango
Womgcinimafa
Wesifunda
SaseGauteng**



Imali Engenile Kithi R6.976bn (5%)



**Izimali
Ezibiziwe
Ngokuqondile**



(Susa: R81.1m)

Isamba Sesabelomali = R 143.292bn

Imali Engenile Kithi

Amalaysense ezimoto

R4.480bn
(64%)



Izintela zokugembula nokubheja

R1.163bn
(17%)



Isamba Semali Engenile
R 6.976bn

Ukuthengiswa kwempahla namasevisi

R656.9m
(9%)



Enye imali engenile

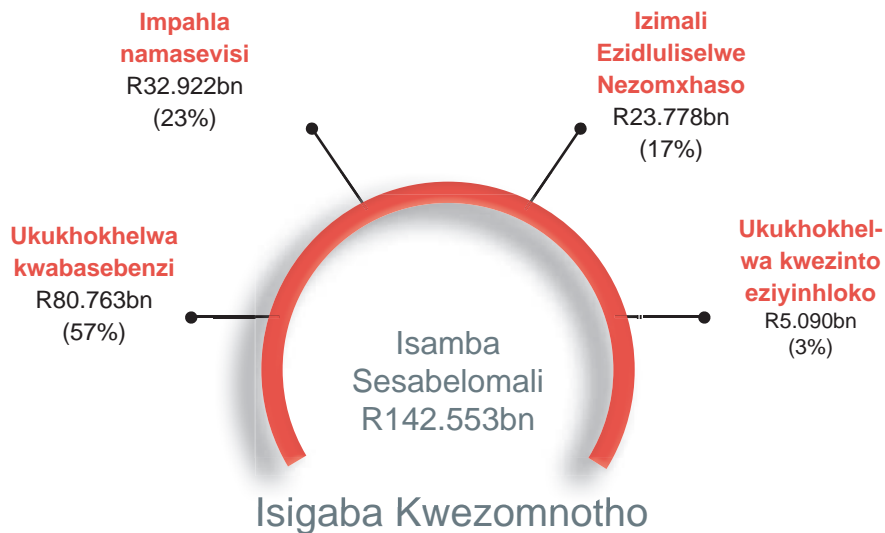
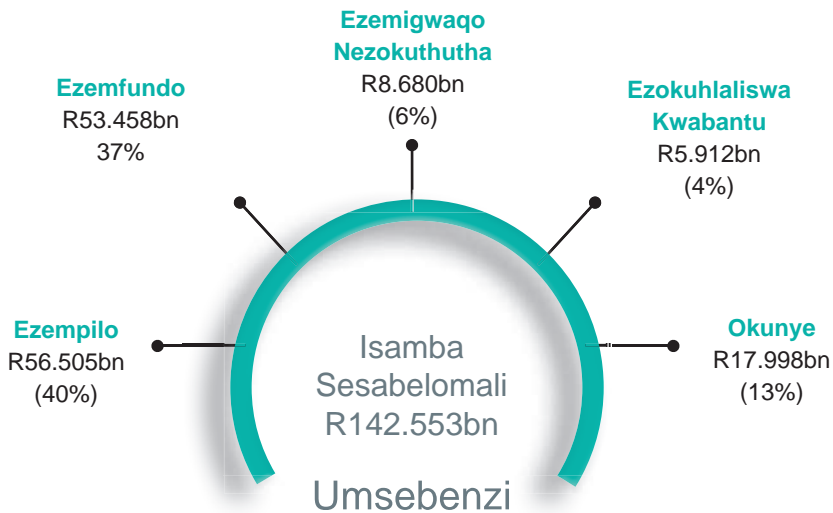
R675.7m
(10%)

Ezinye izimali ezingenile zihlanganisa imali yokuhlawula, izijeziso nokuthathwa kwezinto; inzalo; nokukhokhwa kwezimali zempahla nezikweletu.

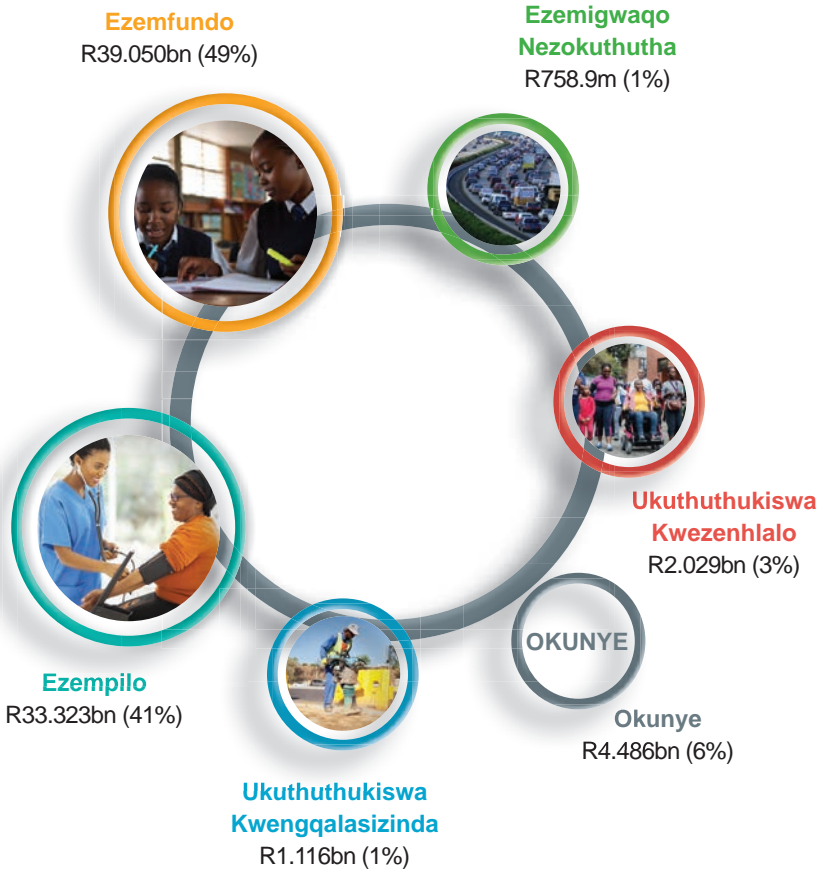
Izimali Zesibonelelo Ezinemibandela



Ukusetshenziswa Kwemali Yesifunda



Ukusetshenziswa Kwemali Kubasebenzi



Okunye kuhlukanisa: Ukuthuthukiswa Komnotho; Ukubusa Ngokubambisana Nezindaba Zendabuko; Ezokuhlaliswa Kwabantu; Ezokuphepha Komphakathi; Ezolimo Nokuthuthukiswa Kwezindawo Zasemaphandleni; Ezemidlalo, Ezobuciko, Ezamasiko Nezikaqedisizungu; i-e-Government, Umnyango Womgcinimafa Wesifunda neHhovisi likaNdunankulu

Ukusetshenziswa Kwemali Kumasevisi Ezenhlalo

EZEMFUNDO



Ezefundo Yezikole Ezivamile Zomphakathi R38.802bn
Ezefundo Yezikole Ezikhethekile Zomphakathi R4.522bn
Izinsizakalo Ezihlobene Nokuhlolwa Nezefundo R1.721bn
Ukuthuthukiswa Kwengqalasizinda R1.619bn
Okunye R6.794bn

EZEMPILO



Amasevisi Ezempilo Zesigodi R19.597bn
Amasevisi Ezibhedlela Ezinyhloko R19.603bn
Izinsiza Kwizibhedlela Zesifundazwe R10.623bn
UkuvuselelwaKwezikhungo Zezempilo R2.276bn
Okunye R4.406bn

UKUTHUTHUKISWA KWEZENHLALO



Izingane Nemindeni R2.619bn
Amasevisi Ezenhlalakahle R989.4m
Amasevisi Okubuyiselwa Kwezinto R783.8m
Ezentuthuko Nocwango R749.1m
Okunye R741.2m

Isamba Samasevisi Ezenhlalo = R 115.846bn

Ukungenelela Okusemqoka okumayelana nezidingongqangi zesifundazwe



Kukuphi lapho sinyuse khona Ukusetshenziswa Kwemali?

UMNYANGO	USHINTSHO LOKUSETSHENZISWA KWEMALI 2020/21	UKUSETSHENZISWA KWEMALI OKUY- INHLOKO 2021/22	% USHINTSHO 2020/21-2021/22
Ezempilo	58 835 503	56 505 266	-4%
Ezempilo	52 876 598	53 458 053	1%
Ukuthuthukiswa Kwezenhlalo	5 887 349	5 882 786	0%
Ezokuhlaliswa Kwabantu	5 377 907	5 912 132	9%
Imigwaqo Nezokuthutha	8 377 996	8 680 417	3%
Ukuthuthukiswa Kwengqalasizinda	3 197 771	3 260 931	2%
Okunye	8 479 267	8 853 221	4%
Isamba Sezimali Ezikhokhiwe Esifundeni Nezilinganiso	143 649 058	142 552 806	-1%
Ezenhlalo	117 599 450	115 846 105	-2%
Okungekhona Okwezenhlalo	26 049 608	26 706 701	2%
Isamba Sokusetshenziswa Kwemali	143 649 058	142 552 806	-1%

Okunye kuhlangukisa: Ukuthuthukiswa Komnotho; Ukubusa Ngokubambisana Nezindaba Zendabuko; Ezokuphepha Komphakathi; Ezolimo Nokuthuthukiswa Kwezindawo Zasemaphandleni; Ezemidlalo, Ezobuciko, Ezamasiko Nezikaqedisizungu; i-e-Government; Umnyango Womgcinimafa Wesifunda neHhovisi likaNdunankulu

Ketapele: Ditekanyetšo Gauteng tša 2020/21



Nomantu Nkomo-Ralehoko

Molekgotlaphethiši: Kgoro ya Ditšhelete

Paka ya peakanyo le tekanyetšo ya mašelang tša Tlhako ya ditshenyegelo tša gare ga ngwaga (MTEF) ya 2021, e tla otlollelwa go ya mafelelong a Pušotaolo ya Botshelela. Tekanyetšo ye ya mašelang e beakantšwe go šeditšwe tshenyoye e tlišitšwego ke go phulega ga leuba la COVID- 19. Leuba le, le gakaditše seemo sa go phuhlama ga ekonomiyi seo Afrika Borwa le Gauteng di kilego tša lebane le sona ngwaga wo o fetilego. Leuba la COVID- 19 ke tiragalo ya moswanamomg ya go tla gatee bophelong yeo e aparetšego lefase ka bophara, yeo e sa kago ya bonwa ngwagakgolong wa go feta. Ke tiragalo yeo gape e gapeletšago batho go phela bophelo bjo e sego bja tlwaelo bja ka mehla.

Kgoboketšo ya tekanyetšo ye ya mašelang e itshetlegile ka dikokwane tša kagoleswa le go kokotlela ga ekonomiyi, gammogo le tsenyotirišong ye e tšwetšego pele ya lenaneo la bosetšhaba la tiišetšo ya ditšhelete go tiišeletša sekoloto sa setšhaba le go netefatša go tsepama ga ditšhelete ka go ditshenyegelo tša gare ga ngwaga.

Tekanyetšo ya mašelang ya MTEF ya 2021 e abile methopo go tšwetša pele ntwaga hlanong le ditlamorago tša leuba la COVID- 19 go šeditšwe seemo sa profense go tša leago le tša ekonomiyi, tšhutišo ya thekgo ya mašelang go tloga go tšhomišo go ya go peeletšo go hlohloliša tsošološo ya kgolo ya ekonomiyi, gammogo le go šireletša methopo yeo e šetšego e beakanyeditšwe go fa thekgo ya mašelang go tsenyotirišong ya “Leano la go godiša Gauteng mmogo la 2030” (GGT2030), leo le šetšego le lokišitšwe go sepelelana le tikologo ye e fetogilego.

Tekanyetšo ya mašelang ya MTEF ya 2021 e phethagatša dikokwane tše bohlokwa tše Tona a di adilego le go di gatelela ka go Polelo ka ga Seemo sa Profense ka la 23 Dibokwana 2021. Dikokwane tše, ke tšona di tla kgontšhago katlego ntweng kgahlanong le leuba la COVID- 19 le go oketša boitokišetšo bja rena go lwantšhana le masetlapelo a mangwe ao a kago hloga. Dikokwane tše di tla kgoletša maatla a Afrika Borwa ka

go kaonafatšo ya ekonomi go šeditšwe kudu tlholego ya mešomo ka go tša intaseteri, tebanyoleswa ya pholisi ya go bolela ka tša leago go šeditšwe bosenyi mola go lebeletšwe bodiidi/bohlaki le go selekalekane, gammogo le go kaonafatša le go godiša go iša ditirelo bathong mola ka go le lengwe go kaonafatšwa pušo le go lokiša diphošo.

Tekanyetšo ya mašeleng ya MTEF ya 2021/22 ke R142.6 pilione, mola R435 pilione e kgobokanyeditšwego MTEF. Seripa se segolo sa tekanyetšo ye ya mašeleng se Abelwa ditirelo tša leago tšeo di abjago ke Kgoro ya Maphelo ya Gauteng, Kgoro ya Thuto ya Gauteng gammogo le Kgoro ya Gauteng ya Tlhabollo ya tša Leago.

Tekanyetšo ya mašeleng ya MTEF ya 2021 ke ye nngwe ya ditsela tša go aga dikwano tša seleago tša go phethagatša "Leano la go godiša Gauteng mmogo la 2030". Mmogo re ka agela batho ba profense bokamoso bjo bo tsepamego.



Nomantu Nkomo-Ralehoko
Molekgotlaphethiši: Kgoro ya Ditšhelete

Tše Bohlokwa tša Go Thlabolla Gauteng Mmogo: Leano la 2030



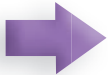
Ekonomi, mešomo le mananeokgoparara



Thuto, phetogo ya mabokgoni le tša maphelodiphetho



Togaganyo ya bodulo bja batho le tokollo ya mabu/dinaga



Polokego, tshwaragano ya leago le polokego ya dilewa



Naga ya go ba le bokgoni, boitshwaro le tšwetšopele



Go aga Afrika ye kaone le lefase ka bophara



Tsetlamišo ya tšwetšopele sebakeng sa mašika ao a tlogo

Methopo ya Ditekanyetšo tša Rena



**Kgoro ya
Ditšhelete ya
Bosetšhaba**



Palomoka R136.397p (95%)

- Kabelano ya tekatekano: R111.429p
- Dithušo tša Ditšhelete tša lebakanyana: R24.968p



**Kgoro ya
Ditšhelete
ya Gauteng**



Letsono la Phrobentshe R6.976p (5%)



**Ditefišo
tša
thwii**



(Go gogilwe: R81.1m)

Palomoka Ya Ditekanyetšo = R 143.292p

Letseno la Rena

Dilaesentse tša difatanaga

R4.480p
(64%)



Metšhelo ya go betša le ya go kempola

R1.163p
(17%)



Palomoka Ya Letseno
R 6.976p

Thekišo ya dithoto le ditirelo

R656.9m
(9%)



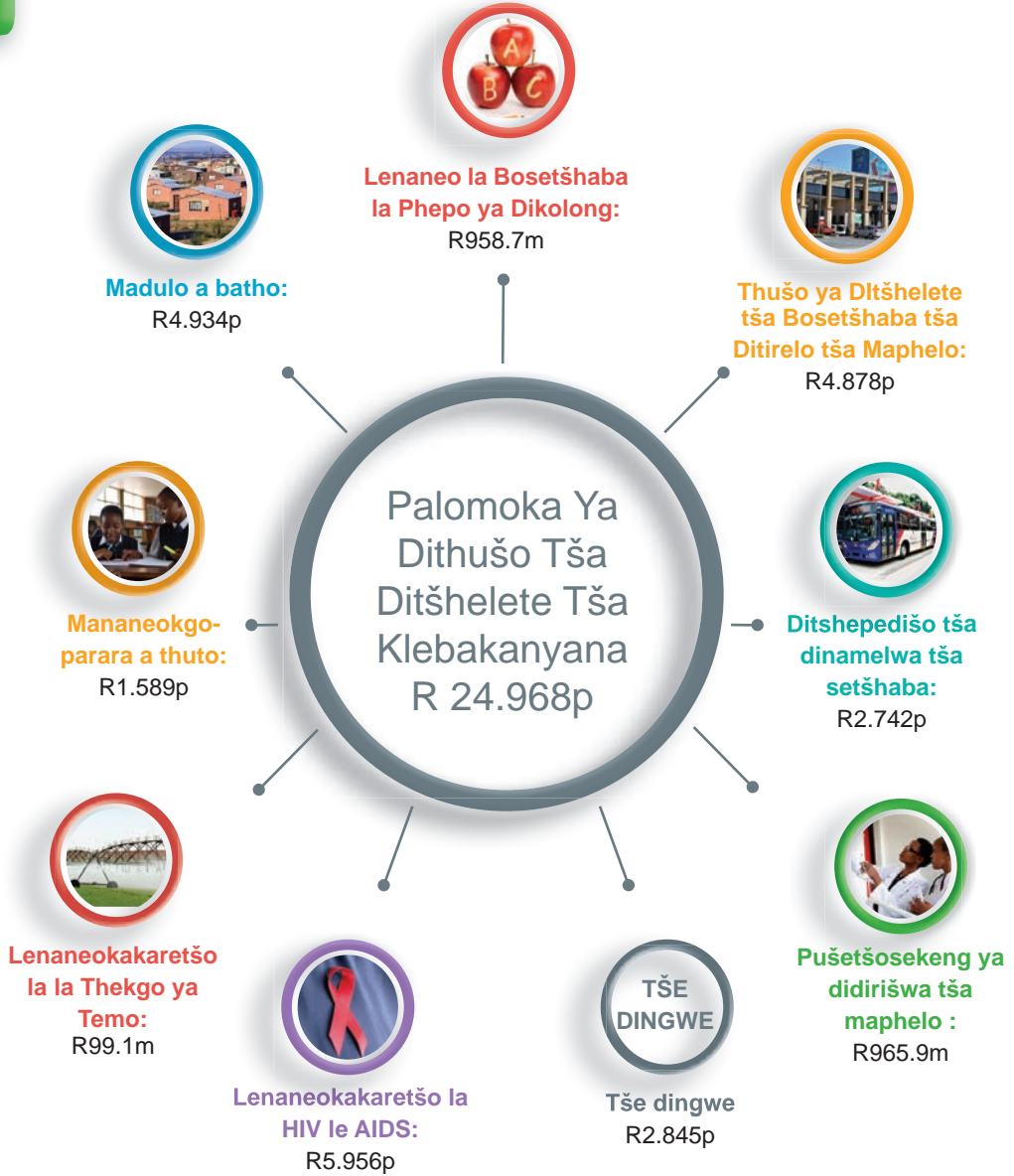
Letseno le lengwe

R675.7m
(10%)

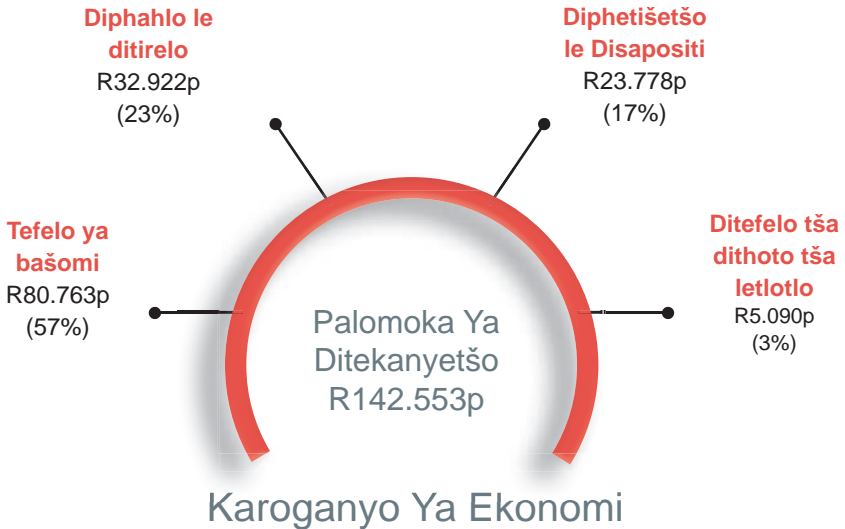
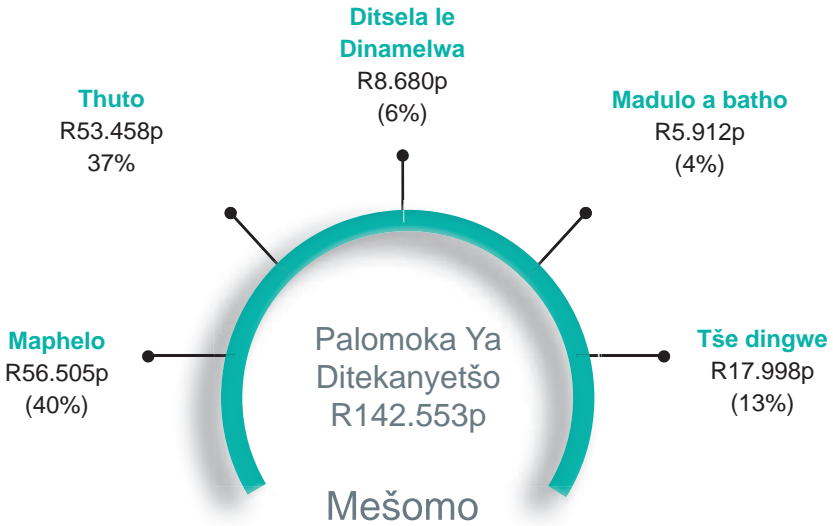


Letseno le lengwe le bopilwe ke difaene; dikotlo le dikgafelo; tswala; le ditheranseke tša ditšhelete tša dithoto le dikoloto.

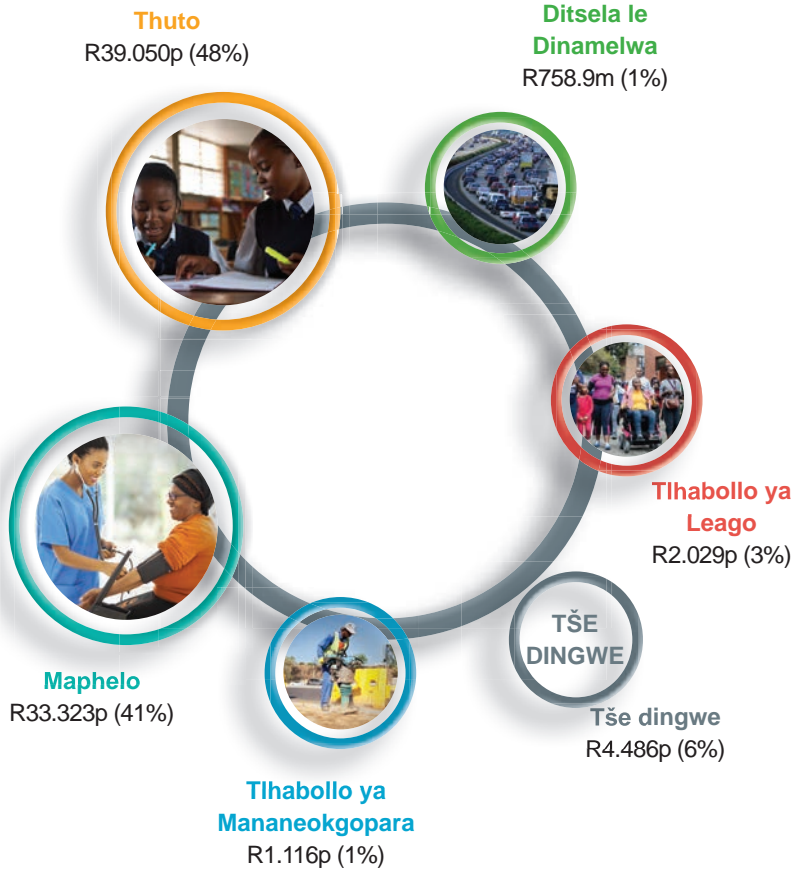
Dithušo tša Ditšhelete tša Lebakanyana



Tšhomišo ya Ditšhelete tša phrobentshe



Tšhomišo ya Ditšhelete go bašomi



Tše dingwe di akaretša: Tihabollo ya Ekonomi; Pušo ya Tirišano le Merero ya Setšo; Madulo a Batho; Polokego ya Setšhaba; Temo le Tihabollo ya Dinagamagae; Dipapadi, Bokgabo, Setšo le boitapološo; Pušo ya elektroniki; Kgoro ya Ditšhelete ya Phrobentshe le Kantoro ya Tonakgolo

Tšhomišo ya ditšhelete go Ditirelo tša Setšhaba

THUTO



Thuto ya Dikolo tša Setšhaba tša Tlwaelo R38.802p
Thuto ya Dikolo ya Setšhaba tše di Kgethegilego R4.522p
Ditirelo tša go amana le Ditlhalobo le thuto R1.721p
Tlhabollo ya Mananeokgoparara R1.619p
Ye nngwe R6.794p

MAPHELO



Ditirelo tša Maphelo tša Selete tše tlemilwego R19.597p
Ditirelo tša Sepetlele tša Bogareng R19.603p
Ditirelo tša Dipetlele tša Phrobentshe R10.623p
Pušetšosekeng ya didirišwa tša maphelo R2.276p
Ye nngwe R4.406p

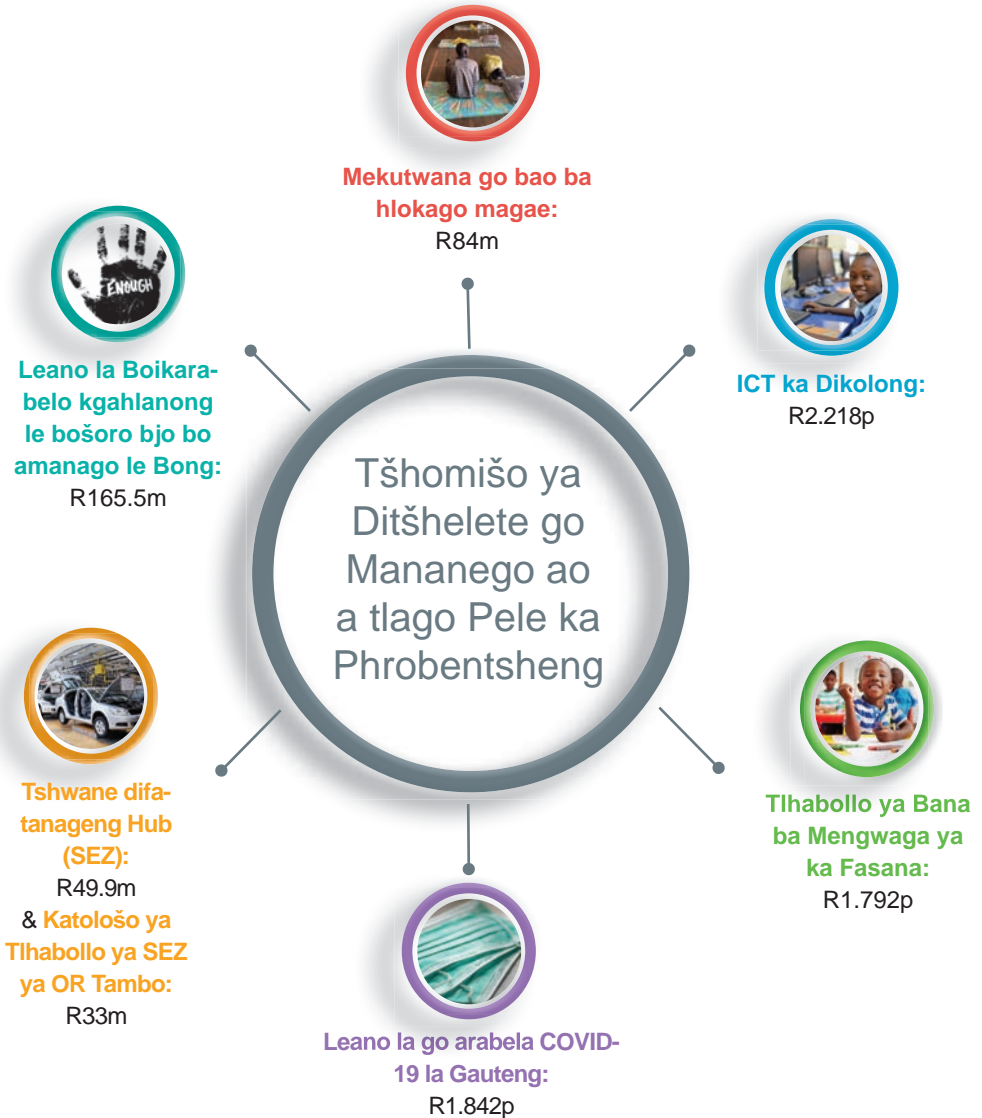
TLHABOLLO YA LEAGO



Bana le Malapa R2.619p
Ditirelo tša Bobotlana R989.4m
Thsepidišo ya Kgoro R783.8m
Ditirelo tša Pušetšosekeng R749.1m
Ye nngwe R741.2m

Palomoka Ya Ditirelo Tša Setšhaba = R 115.846p

Tšhomišo ya Ditšhelete go Mananego ao a tlogo Pele ka Phrobentsheng



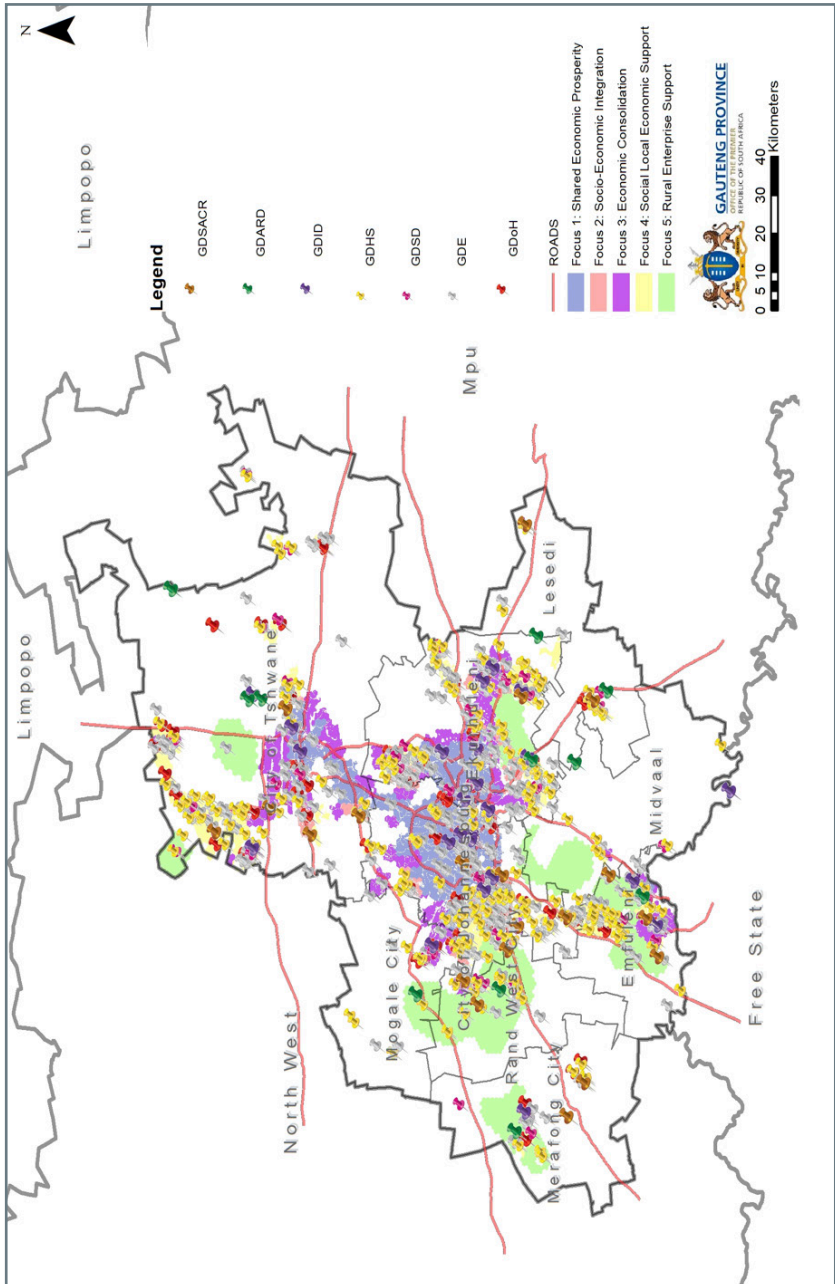
Naa ke kae fao re okeditšego tšhomišo ya rena ya ditšhelete?

KGORO	DITEKANYETŠO TŠE DI BEAKANTŠWEGO LESWA 2020/21	DITEKANYETŠO-KGOLO 2021/22	% YA PHETOGO 2020/21 – 2021/22
Thuto	58 835 503	56 505 266	-4%
Maphelo	52 876 598	53 458 053	1%
Tlhabollo ya Leago	5 887 349	5 882 786	0%
Madulo a Batho	5 377 907	5 912 132	9%
Ditsela le Dinamelwa	8 377 996	8 680 417	3%
Tlhabollo ya Mananeokgoparara	3 197 771	3 260 931	2%
Ye nngwe	8 479 267	8 853 221	4%
Palomoka ya Ditefelo le dikakanyetšo tša ka phrobentsheng	143 649 058	142 552 806	-1%
Leago	117 599 450	115 846 105	-2%
Tše e sego tša Leago	26 049 608	26 706 701	2%
Palomoka ya Ditekanyetšo	143 649 058	142 552 806	-1%









Ye nngwe e akaretša: Tlhabollo ya Ekonomi; Pušo ya Tirišano le Merero ya Setšo; Polokego ya Setšhaba; Temo le Tlhabollo ya Dinagamagae; Dipapadi, Bokgabo, Setšo le Boitapološo; pušo ya elektroniki; Kgoro ya Ditšhelete ya Phrobentshe le Kantoru ya Tonakgolo

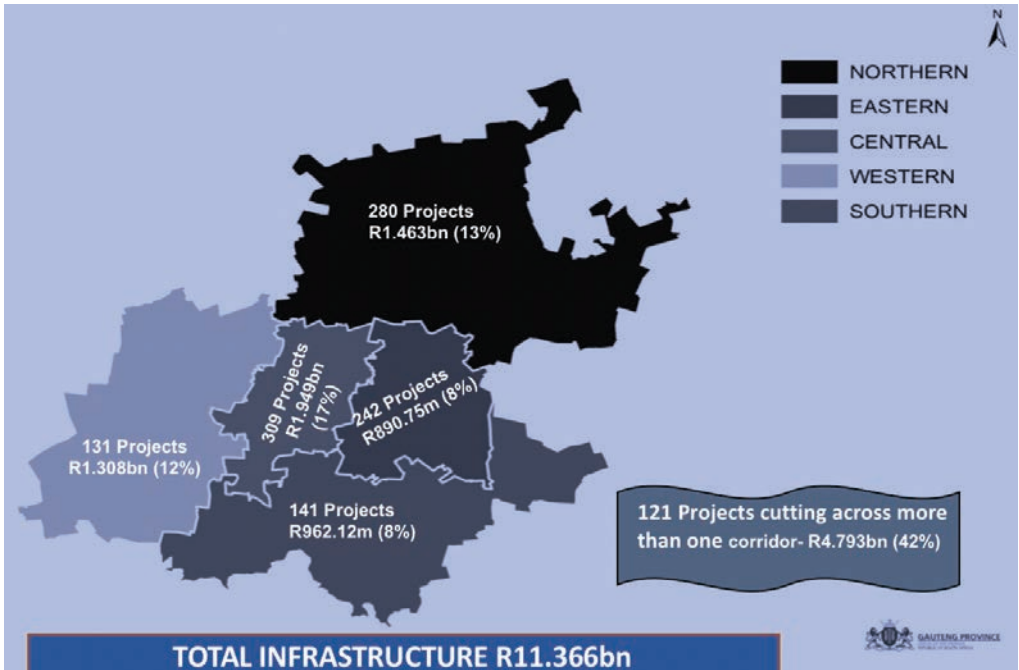
Spatial Referencing of the Infrastructure Budget

Spatial location of infrastructure projects along the provincial focus areas



Summary of Infrastructure Budget per Department

Symbol	2021/22 Infrastructure Budget (R'000)	
	GDoH	2 161 698
	GDE	1 621 755
	GDSD	149 480
	GDHS	5 131 300
	GDRT	2 043 716
	GDARD	48 473
	GDSACR	19 406
	GDID	190 281
Total	11 366 109	



Spending on Infrastructure



Health
R2.162bn

Improving quality of health care.

Central Corridor

R866m

Eastern Corridor

R205.2m

Northern Corridor

R540.4m

Southern Corridor

R280.9m

Western Corridor

R261.9m

Across various Corridors

R7.3m



Education
R1.622bn

Improving quality of education.

Central Corridor

R225.4m

Eastern Corridor

R138m

Northern Corridor

R113.8m

Southern Corridor

R83.5m

Western Corridor

R45.8m

Across various Corridors

R1.015bn



Roads and Transport
R2.044bn

Improving roads and linkage in the province.

Central Corridor

R166.5m

Eastern Corridor

R75.8m

Northern Corridor

R337.3m

Southern Corridor

R74m

Western Corridor

R88.5m

Across various Corridors

R1.302bn



Human Settlements
R5.219bn

Improving quality of household life.

Central Corridor

R516.3m

Eastern Corridor

R452m

Northern Corridor

R438.9m

Southern Corridor

R779.9m

Western Corridor

R866.2m

Across various Corridors

R2.378bn

Access to Information

Please call us if you have any information on fraud and corruption in the Gauteng Provincial Government.

Fraud and Corruption toll free Number

0800 701 701

Visit our website at:

www.gauteng.gov.za

Comments on the budget are welcome and can be forwarded to:

Head of Department

Gauteng Provincial Treasury

Private Bag X12

Marshalltown

2107

Telephone no: (+27) 11 227 9000

Contact Information:

Physical Address:

75 Fox Street, Imbumba House,
Johannesburg
2107

Postal Address:

Private Bag X12,
Marshalltown,
Johannesburg,
2107

Switchboard:

011 227 9000

Email address:

GPTCommunications@gauteng.gov.za

Website Address:

www.gauteng.gov.za

Author Unknown, [ONLINE]. <https://equitas-legal.com/zambian-corporate-finance-options-and-the-securities-commercial-paper-guidelines-2020/> FC Image:

Author Unknown, [ONLINE]. <https://economictimes.indiatimes.com/magazines/panache/path-breaking-ideas-for-used-face-masks/articleshow/90916830.cms>

PR04/2021

ISBN: 978-0-621-49086-2